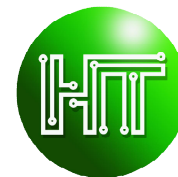


英式USB 挂墙充电方案



芯高科技
HIGH TECH
TECHNOLOGY LIMITED



提供应用的芯片

HT6329 / HT6122 DC-DC Converter

HT5350 PD Protocol



一般英式USB 挂墙充电规格



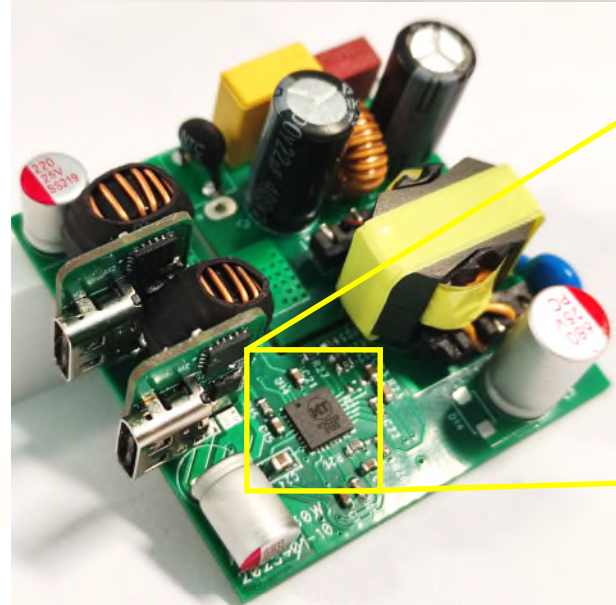
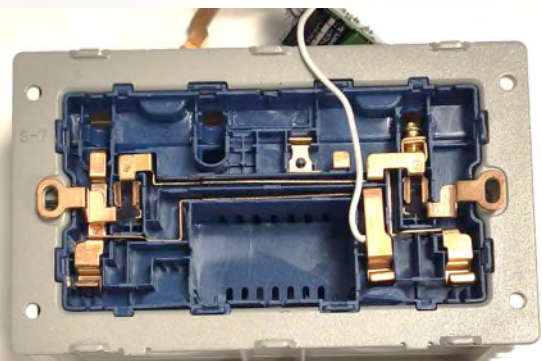
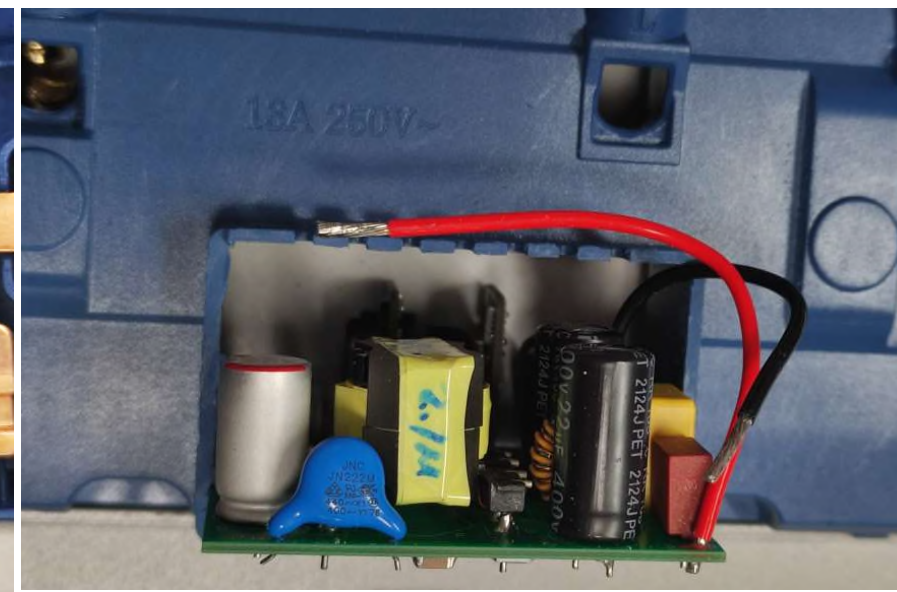
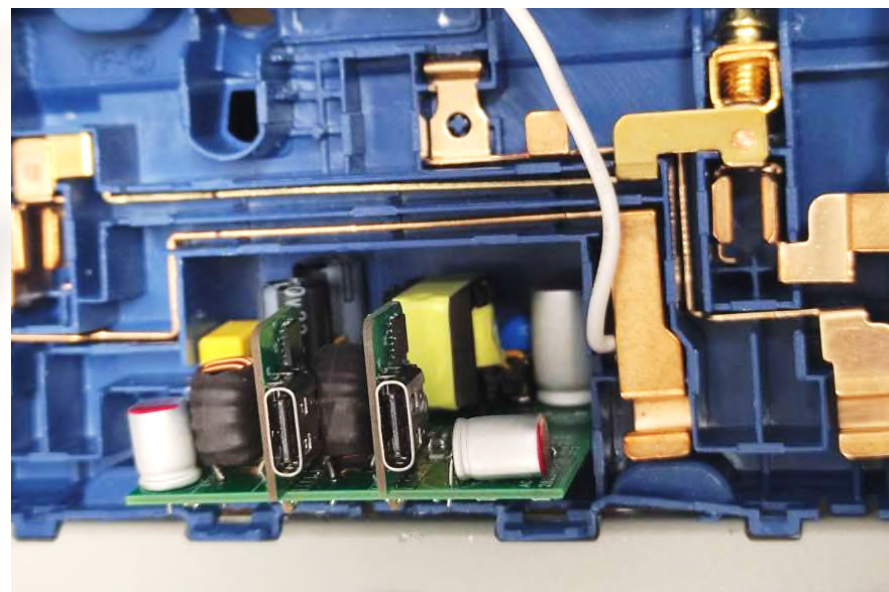
每端口 2.1A
 $5V \times 2.1A = 10.5W$ 最大

一般市场上的大多数产品都是10W。HTT 模组可提供30W功率。

HTT 30W双USB Type-C英式挂墙充电方案



芯高科技
HIGH TECH
TECHNOLOGY LIMITED



Internal Use Only

输入电压	200V~240V 50/60Hz
单端口输出	5V 3A, 9V 3A, 12V 2.5A, 15V 2A, 20V 1.5A
双端口输出 1	5V 3A, 9V 1.5A
双端口输出 2	5V 3A, 9V 1.5A
最大功率	30W

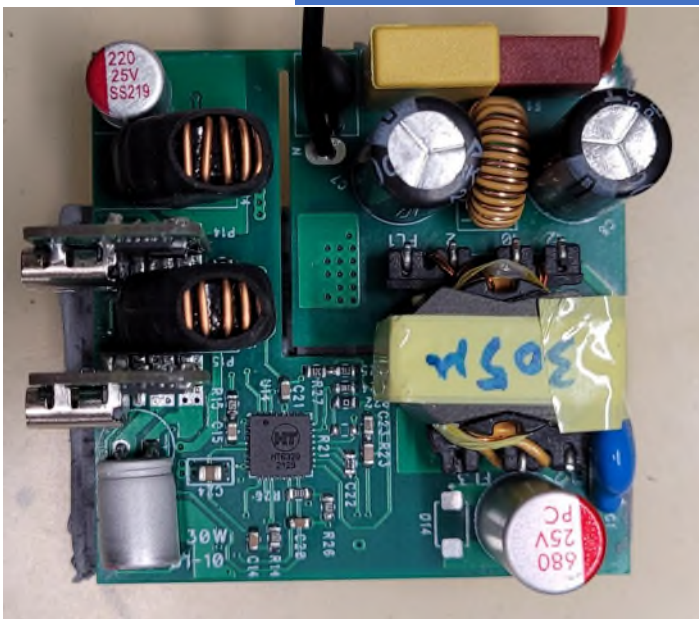
英式挂墙充电模块



芯高科技
HIGH TECH
TECHNOLOGY LIMITED

- 尺寸: 45mm(长) x 45mm(阔) x 23mm(高)

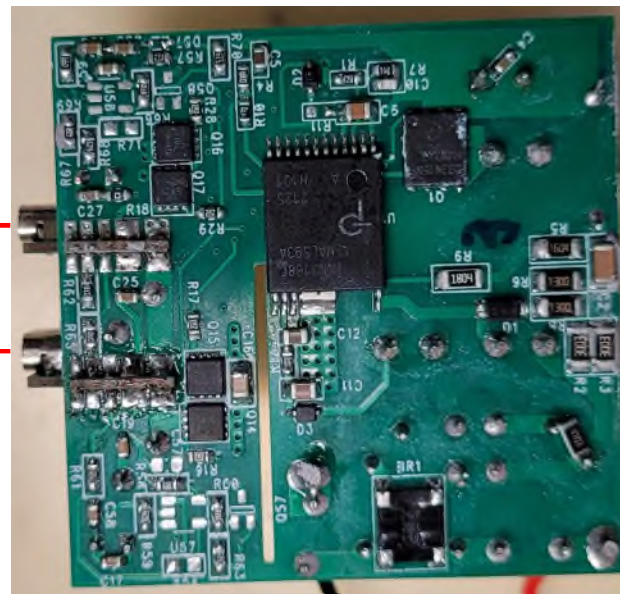
输入220V



演示板 (顶视图)

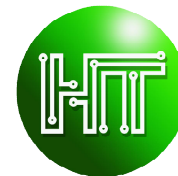
输出 1

输出 2

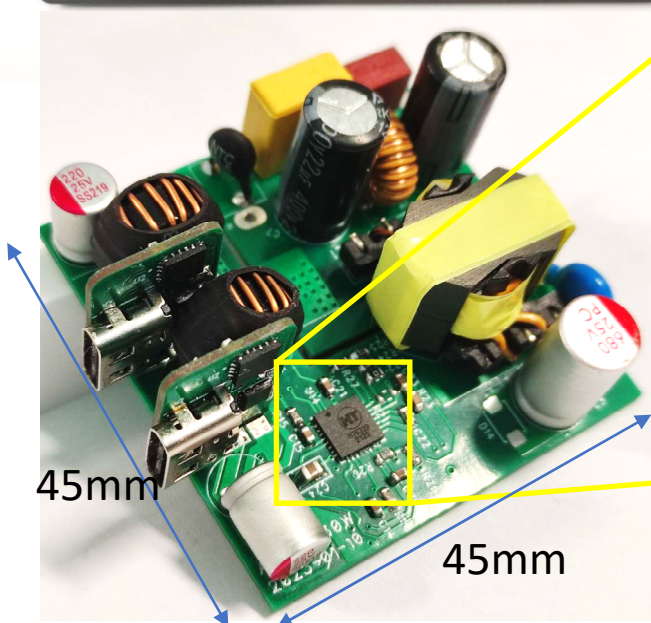
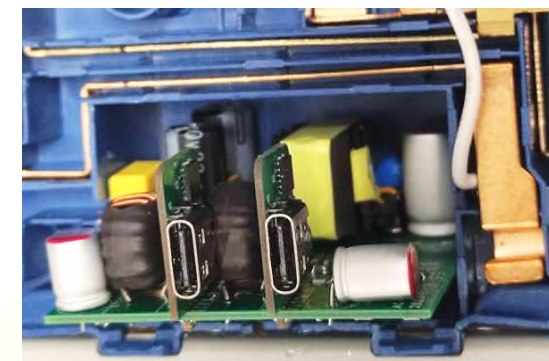
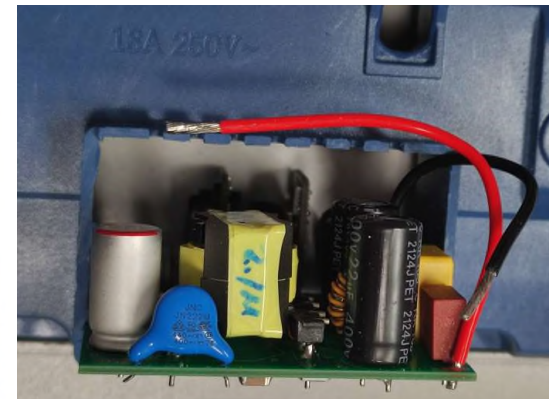
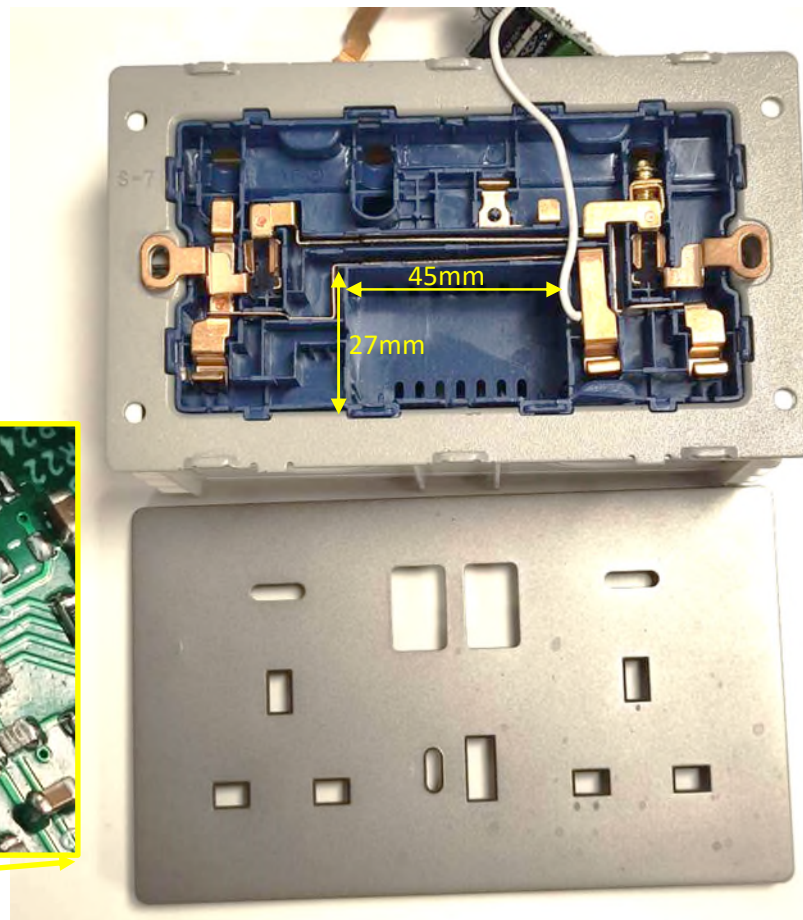
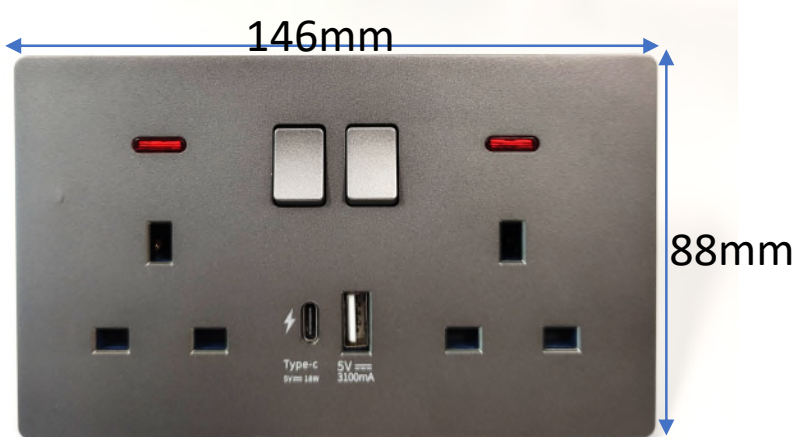


演示板 (底视图)

英式挂墙充电模块配置

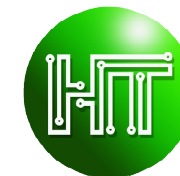


芯高科技
HIGH TECH
TECHNOLOGY LIMITED



Internal Use Only

英式挂墙充电模块规格摘要



芯高科技
HIGH TECH
TECHNOLOGY LIMITED

操作模式:	单通道	双通道										
输入电压	AC 220V-240V											
输出电压和电流范围 (最大输出功率是 15W + 15W)	(5V 3A), (9V 3A), (12V 2.5A), (20V 1.5A)	双通道的最大 总输出电流为 6A <table border="1"><thead><tr><th>USB-C1</th><th>USB-C2</th></tr></thead><tbody><tr><td>5V/3A</td><td>5V/3A</td></tr><tr><td>9V/1.65A</td><td>9V/1.65A</td></tr><tr><td>12V/1.25A</td><td>12V/1.25A</td></tr><tr><td>15V/1A</td><td>15V/1A</td></tr></tbody></table>	USB-C1	USB-C2	5V/3A	5V/3A	9V/1.65A	9V/1.65A	12V/1.25A	12V/1.25A	15V/1A	15V/1A
USB-C1	USB-C2											
5V/3A	5V/3A											
9V/1.65A	9V/1.65A											
12V/1.25A	12V/1.25A											
15V/1A	15V/1A											
主要支持的快速充电协议	PD 3.0, QC 3.0*											
尺寸	45mm(长) X 45mm(阔) X 23mm(高)											
最大输出功率	30W	15W + 15W = 30W										
负载调节(Load Regulation)准确度	输出电压在不同负载下准确度达 98%#											
最大功率转换效率	85%	85%										
短路(Short Circuit)测试	✓											

* QC3.0: Based on QUALCOMM webpage: Charge up to 4 times faster than conventional 5W chargers.
(<https://www.qualcomm.com/news/onq/2015/09/14/introducing-quick-charge-3-0-next-generation-fast-charging-technology>)

Definition: (Actual Vout / Target Vout) %

Internal Use Only



芯高科技
HIGH TECH
TECHNOLOGY LIMITED

芯度技術 高度品質

用「芯」為您創出科技高峰
hightt.com

聯絡我們 Contact Us (Hong Kong Office)

Tel: (852) 36195375 Address: Unit 713, 7/F, 12W, 12 Science Park West Avenue,
Email: httadmin@hightt.com Hong Kong Science Park, Shatin, Hong Kong

DISCLAIMER

這個文件內所有信息、產品圖片和顯示內容僅供參考。實際產品功能、成本和規格等（包括但不限於外觀、顏色和尺寸）以及實際顯示內容（包括但不限於背景、UI和圖標）可能會因時間及實際情況有所差異。這個文件內所有數據及比較是在特定情況下對比市面部份同類產品，均為內部實驗室通過特定條件下進行的測試獲得的理論值，如實際充電時間及快充模式兼容性等是可能因客觀環境而變化，所有結果會因此出現差異。由於個別產品、軟件版本、應用條件和環境因素的差異，實際數據可能會有不同。所有數據因實際使用而有所不同。受條款及細則約束，請參閱上述產品詳細和規格。有關更多信息、文件內容、產品信息、價格等如有更改，恕不另行通知。
All data, images and content in this document are for reference only. Actual function, cost and specification etc. (included but not limited to appearance, color and size) as well as content shown (included but not limited to background, UI and icons) may be subjected to changes according to time and actual situation. All data included in this document are compared with market products under specific circumstances. Theoretical values were attained by test under specific conditions at internal laboratory. For example, actual charging time and compatibility of Fast Charging Protocol are subjected to changes under different conditions, thus may leading to differ in results. Different software updates, application conditions and environment factor in individual product may lead to differ in experimental results. All data may differ from actual application and subjected to terms and conditions, please refer to details and specifications herein. We reserve the right to make changes at any time, of any products or specifications herein, without further notice.